

Theme: 4
Key Stage: 2

People of Blaenavon

Dear Time Traveller,



You have been chosen by your teacher to be transported back in time between the years:

1816 up to 1890

Your mission is to gather information. You will need to report back to your teacher when you return to the present time.

Using one of the touch-screens, select **Working Conditions**. Then go the section on **Blaenavon Jobs** to find out more about what work was like during the 19th century. Make some notes about their jobs:

Using the touch-screens, select **Working Conditions**. Then read the section called **A Dangerous Day**. Do you think that the workers worked in dangerous conditions? Look at the wall display date for 1838. Make a note of the dangers faced by workers:

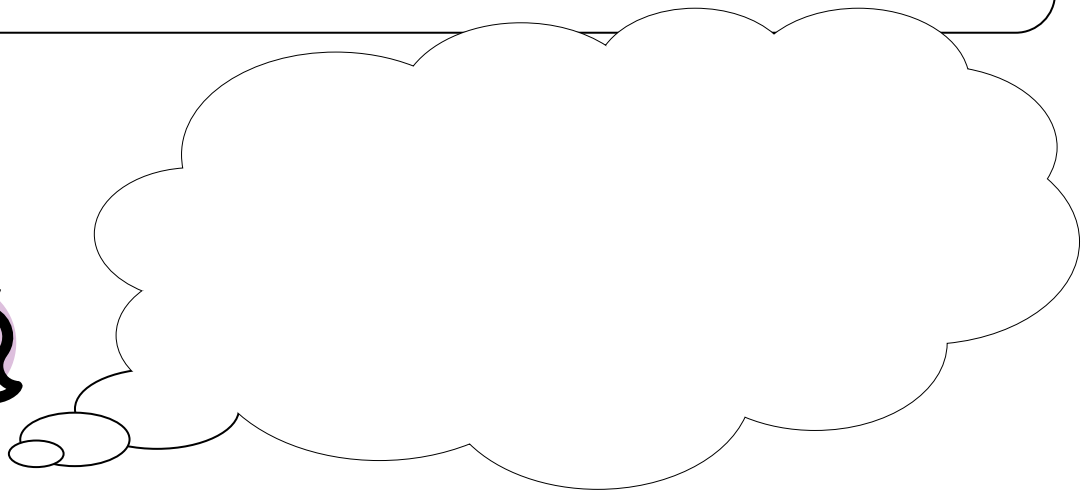
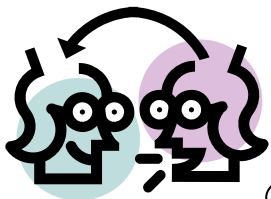
Theme: 4

Key Stage: 2

People of Blaenavon

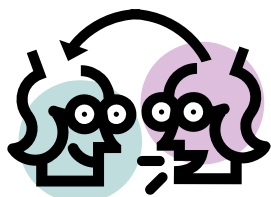
The owners of the ironworks were unpopular with many of the people who worked for them. In 1816, the demand for iron fell which meant that the price of iron fell too. In order to save money, the owners reduced the workers' wages which made many of them angry. Workers were also unhappy about the way in which they were paid. Read the **Workers and Masters** display and timeline dates for 1816, 1822 and 1831.

What are tokens? Where could they be spent?



Many workers began to riot. (Riot = to protest using violence and damage to property) What can you find out about these riots? Use the wall display and timeline dates for 1816, 1822 and 1831 to help you.

Why did the workers riot?



Do you think that it was a good idea to riot?
Discuss this with your group.

Theme: 4

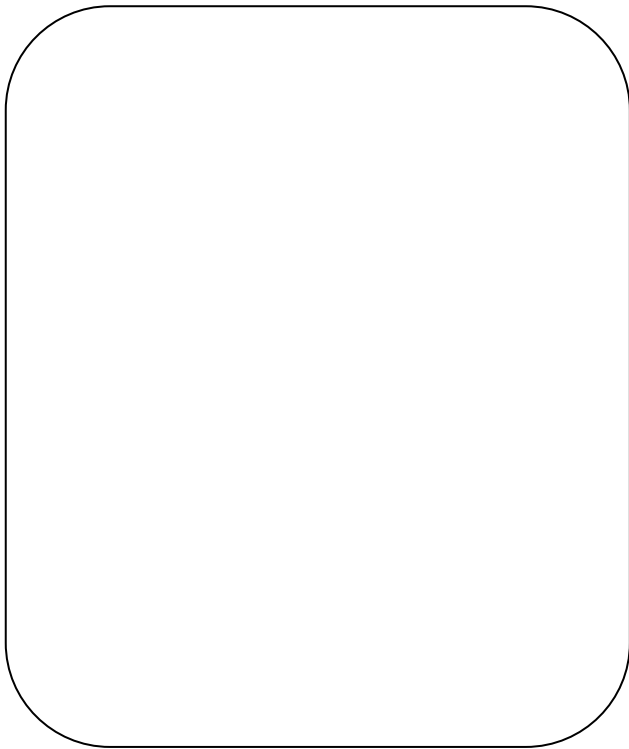
Key Stage: 2

People of Blaenavon

Workers formed groups who would help fight for higher wages and better working conditions. They were called the Scotch Cattle. Look at the **Workers and Masters** display and read the newspaper report of 1832 and timeline date for 1835.

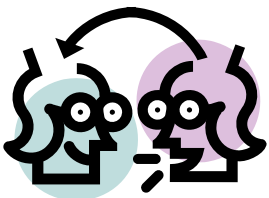
Anyone who went against the Scotch Cattle was seen as a traitor to the workers. The commander of the Scotch Cattle at one time in Blaenavon was John Evans. On the display board, can you find a warning which John Evans may have given to anyone who he thought was a traitor?

Copy it out in the box below. It is unpleasant! Look out for the bull!



Draw the picture above the warning.

Can you guess what creature this is?



Do you think that life was really that bad for the workers in Blaenavon in the 19th century? Discuss this with your group.

When you have finished, have a look at the timeline on the other side of the room. Make notes on the back of this sheet about changes to working hours in 1872 and something built at Blaenavon in 1883. Do you think these changes made life better or worse for workers?