

Theme: 4

Key Stage: 2

People of Blaenavon

Dear Time Traveller,



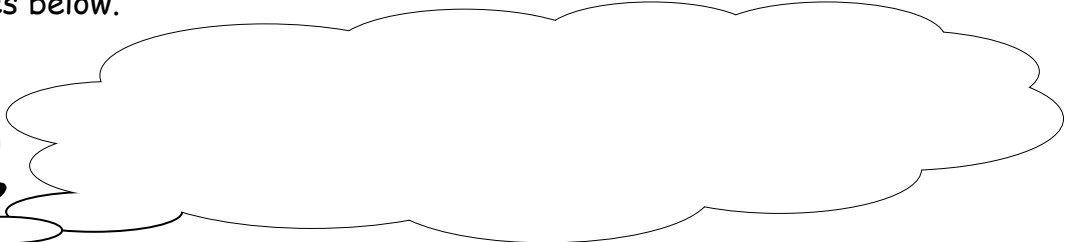
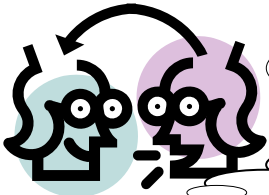
You have been chosen by your teacher to be transported back in time between the years:

1835 up to 1901

Your mission is to gather information. You will need to report back to your teacher when you return to the present time.

Growing up in 1835 the chances are that you wouldn't have gone to school. Great you might say! But are you sure? Now you will find out what life was like for children over 150 years ago.

Using one of the touch-screens, select **Working Conditions**. Then go to the section called **Child Labour**. Also read the display board called **Women and Children in Industry** to learn how Margaret Thomas and Mary Daniel described their work. Make some notes below.

A large, empty rounded rectangular box with a black border, intended for the student to write their notes.

Theme: 4

Key Stage: 2

People of Blaenavon

In 1841, William Brockway was 6 years old and he lived in Abersychan near Blaenavon. If you'd like to see his diary, select **Living Conditions** on one of the touch-screens and go to the section called **A Week in the Life of a Child**. Make some notes to help you share this information with your class.

Monday - 6.00 am.
Dad woke me up to go to work.
I have bread for breakfast but there's no money left so I can't have anything else.

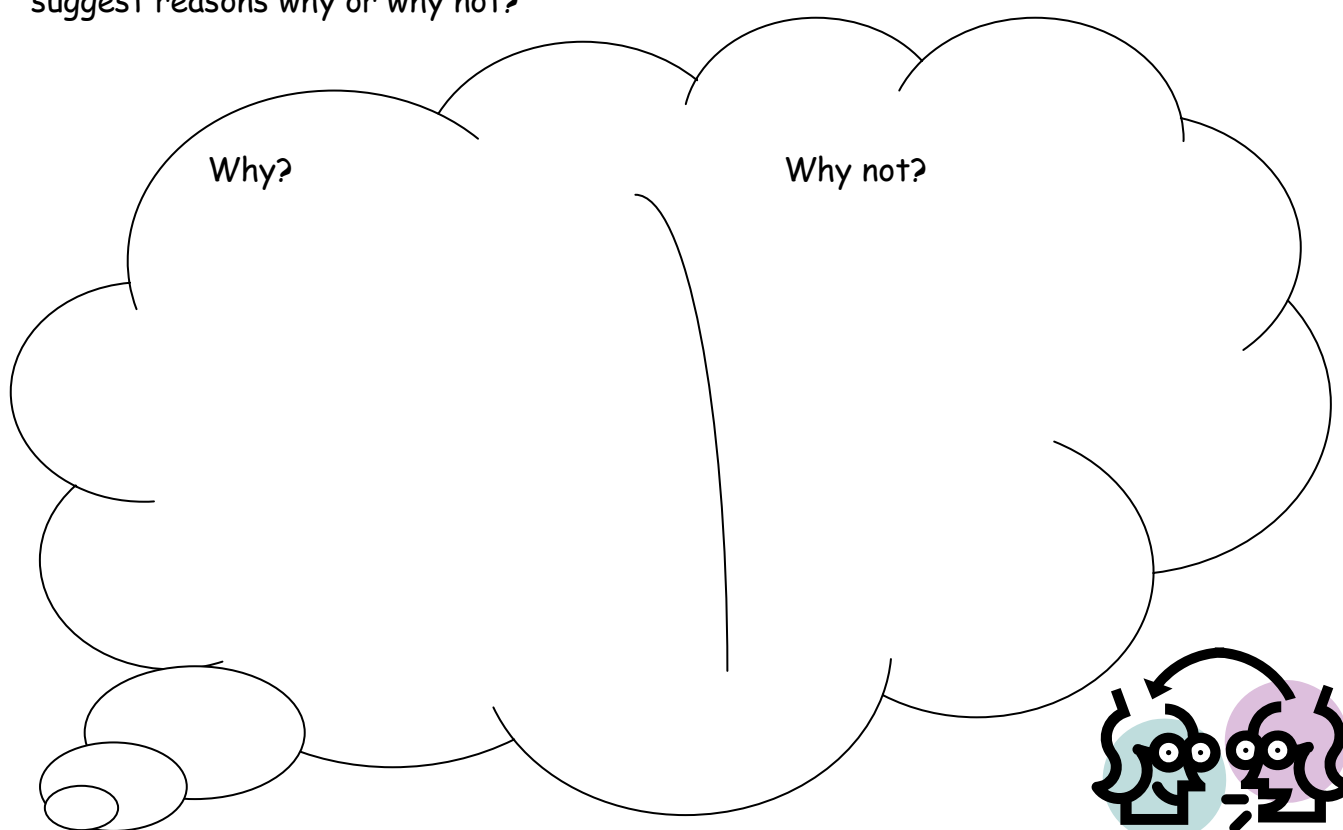
Theme: 4

Key Stage: 2

People of Blaenavon

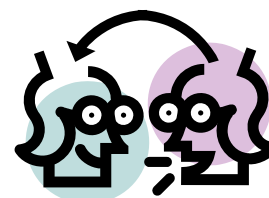
In 1842 a new law was passed which affected people who worked underground in mines. Read the timeline entry for 1841 - also read and look at the pictures on the display board called **Women and Children in Industry** to find out more.

Do you think that people were pleased that the 1842 law was passed? Can you suggest reasons why or why not?



On the timeline, read what happened in 1850 when an inspector came to Blaenavon to find out if the law passed in 1842 was working well.

Why do you think this happened?
Think about your reasons in the think bubble above.
Discuss this with your group.



When you have finished, have a look at the timeline on the other side of the room. Make notes on the back of this sheet about children or schools which are mentioned for these dates: 1880, 1891, 1893, 1899 and 1901. What changes would you have seen growing up as a child in 1835 compared to 1901?