

Theme: 4
Key Stage: 2

People of Blaenavon

Dear Time Traveller,



You have been chosen by your teacher to be transported back in time between the years:

1835 up to 1913

Your mission is to gather information. You will need to report back to your teacher when you return to the present time.

You will need to find out what it was like to live in Blaenavon between 1835 and 1913. Home life was very different for the people who owned the ironworks (called ironmasters) compared to the people who worked for them in the mines and works.

Using one of the touch-screens, select **Living Conditions**. Then go to the section called **Homes**. Compare each home in the table below. Who lived in the houses? How many rooms were there? What furniture did they have?

<u>Ironmaster's Home</u>	<u>Ironworker's Home</u>

Think about your own home - which room is missing from each of the 2 houses above?

Theme: 4

Key Stage: 2

People of Blaenavon

Use the timeline on the wall to find out about how diseases affected people in Blaenavon and South Wales at this time. Sometimes many people were affected by the same disease in one place - this was called an epidemic.

Using the timeline, look at the date 1849 and the poster with the title: Cholera at Merthyr Tydfil.

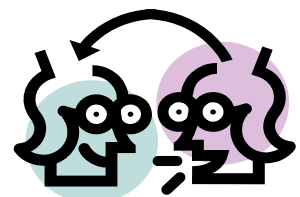
How many people died? How was Cholera spread?

Why was a Local Board of Health set up in Blaenavon in 1860? What was its job?

If you look across the room to the wall displays on the other side, you will find that 5 epidemics of a disease affected Blaenavon between 1860 and 1890.

What was the name of the disease. What were the dates and how many people died?

What do you know of this illness?
Discuss this with your group.



Theme: 4

Key Stage: 2

People of Blaenavon

In 1909 and 1912, the County Medical Officer wrote two reports about living conditions at Blaenavon. What did he find out?

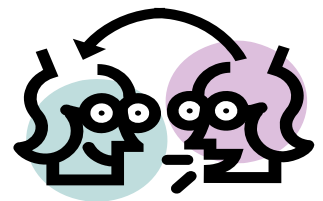
What was the first thing that was planned to solve the problem? Clue: Look at 1913

We all know that a healthy diet is important.

How much do you think your family spends on food each week?

Using one of the touch-screens, select **Living Conditions** and then go to the game called **A Living Wage**.

Do you think your family could manage with 240 pence each week to spend? What could you buy? Discuss this with your group.



When you have finished, use the information on the touch-screens and wall display boards to make notes on the back of the sheet about the health of people living in Blaenavon during the 19th century.