

**Theme: 2**

**Key Stage: 2**

**Landscape**

Dear Time Traveller,



You have been chosen by your teacher to be transported back in time between the years:

**1750 up to 1900**

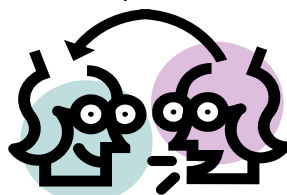
Your mission is to gather information. You will need to report back to your teacher when you return to the present time.

You will find out about the changes to the way that people and goods moved about during the 19<sup>th</sup> century. Go to the wall display board called **Lord Abergavenny's Hills**. Look for someone called Abraham Harry. What did he do for a living?

How was the coal and lime taken to Abergavenny?

How do you think heavy goods were moved about during the Industrial Revolution - a time 200 years ago when new industries were starting up all over Britain?

Jot down some of your suggestions:



**Theme: 2**

**Key Stage: 2**

## **Landscape**

Using the touch-screens, select **Transport**. Then go to the section called **Before the Canals & Railways**. Find the photograph of the old road to Blaenavon. How would you describe it?

Before the ironworks was built, why couldn't vehicles such as carts be used on the roads around Blaenavon?

Return to the main **Transport** menu. Then go to the section called **Raw Materials**. Although all the raw materials needed to make iron were to be found in the hills about Blaenavon, what was the main problem?

What was a dramroad?

Look carefully for old pictures of dramroads and compare them to a photograph of a dramroad today. What has been removed and re-used?

Where did the power come from to move the drams along the dramroads?

**Theme: 2**

**Key Stage: 2**

# Landscape

Return to the main Transport menu. Then go to the section called **Getting the Goods to Market**. Press thumbnail 1 on the map.

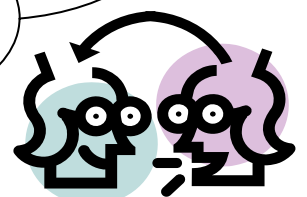
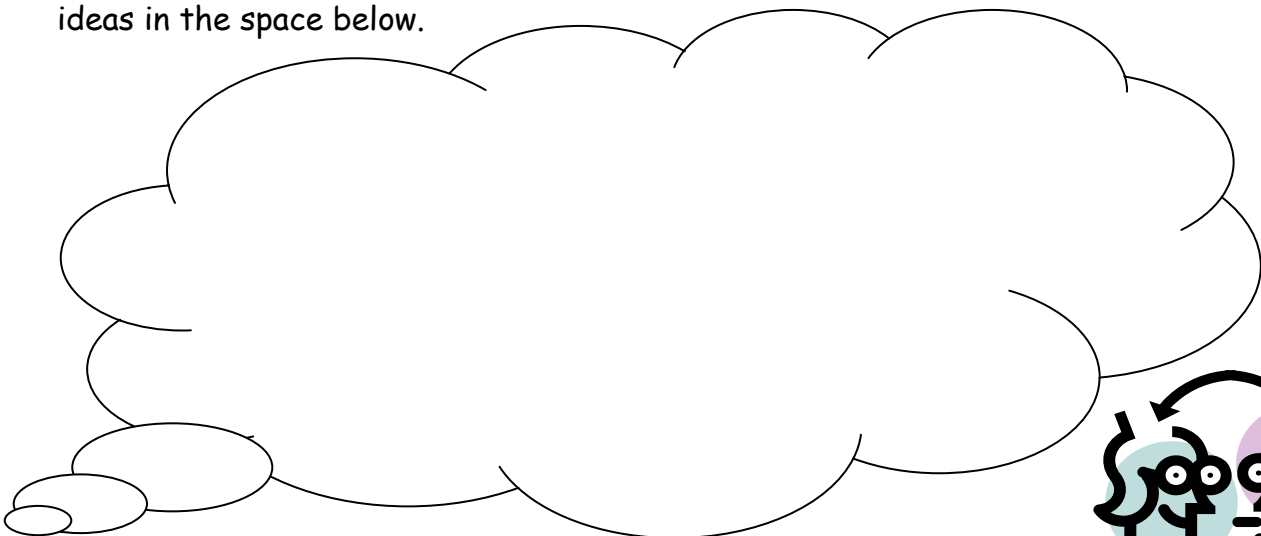
What happened in 1789 in Blaenavon?

What was needed to make the business a success?

Where was the coal and iron from Blaenavon taken before it could be sent abroad?

What happened in 1792?

A horse can pull 1 ton of goods in a cart on the road but the same horse can pull 40 tons of goods loaded into a canal boat. How is this possible? Write down your group's ideas in the space below.



**Theme: 2**

**Key Stage: 2**

# Landscape

What did a navy for a living?

Press thumbnail 2 on the map.

When was the Brecknock & Abergavenny Canal completed?

Why did the Brecknock & Abergavenny Canal Company decide to reduce the price (called a toll) it charged for carrying iron in 1817?

Press thumbnail 3 on the map. What did Hill's tramroad link together?

What was the Pwll Du tunnel used for?

Press thumbnail 7 on the map.

At Llanfoist, coal and iron was loaded on to?

List the types of materials carried on the canal.

Press thumbnail 8 on the map and then thumbnail 9 once it appears. On the second page, find a picture of Newport Docks in 1842 with large ships ready to travel to sea. How were these ships powered?

**Theme: 2**

**Key Stage: 2**

# Landscape

Now go to the timeline wall display and look for a picture painted by John Thomas in 1821 called **The Homfray Coal train**. Describe what you can see.

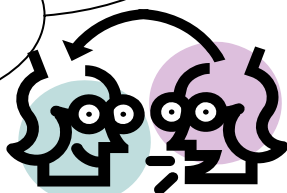
What world-first event took place ...

... in 1804 at Merthyr Tydfil?

... in 1825 on the Stockton & Darlington Railway?

Read the large wall display called **Rails around the World**. Before the steam railways, what was the fastest speed that anyone could travel?

What changes did railways bring to the way that people and goods could be moved?



**Theme: 2**

**Key Stage: 2**

# Landscape

What happened in 1854 in Blaenavon?

How did this affect the way that the canals were used?

Search for a picture of a ship called **HMS Fame** from 1900, under the wall display called **King Coal Reigns** on the other side of the room. How was HMS Fame powered?

Next, go back to the end of the timeline on the opposite side of the room and search for a picture of a ship called **The Great Eastern** which was launched in 1858. Can you work out how this ship was powered from the evidence in the picture?

Think back to the picture of the great ships at Newport Docks in 1842. Then compare how each of these 3 ships were powered below.

1842 - Ships at Newport Docks.  
Powered by:

1858 - The Great Eastern  
Powered by:

1900 - HMS Fame  
Powered by:

How did the way in which ships were powered and travel on sea change in the 19<sup>th</sup> century? Discuss this with your group.

